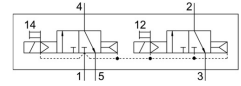


# Air solenoid valve VSVA-B-T32C-AH-A2-1R5L

FESTO

Part number: 546764



## Data sheet

Feature	Value
Valve function	2x3/2, closed, monostable
Actuation type	Electrical
Width	18 mm
Standard nominal flow rate	400 l/min
Pneumatic working port	Sub-base, size 18 mm as per ISO 15407-1 Size 02 sub-base as per VDMA 24563
Operating voltage	24V DC
Operating pressure	0.3 MPa ... 0.8 MPa
Operating pressure	3 bar ... 8 bar
Structural design	Piston gate valve
Reset method	Pneumatic spring
Certification	C-Tick c UL us - Recognized (OL)
CE marking (see declaration of conformity)	As per EU EMC directive
Degree of protection	IP65
Nominal width	5 mm
Type code	VSVA
Exhaust air function	With flow control option
Sealing principle	Soft
Mounting position	Any
Conforms to standard	ISO 15407-1 VDMA 24563
Manual override	Non-detenting
Type of control	Pilot-controlled
Pilot air supply port	Internal
Flow direction	Non-reversible
Symbol	00991805
Lap	Overlap
Signal status display	LED
Flow rate of pneumatic valve	600 l/min
Flow rate of pneumatic valve on individual sub-base	450 l/min
Optimized flow rate of pneumatic valve pneumatically concatenated flow	400 l/min
Switching time off	22 ms
On switching time	10 ms
DC operating voltage range	21.6 V ... 26.4 V
Duty cycle	100%

Feature	Value
Max. positive test pulse with 0 signal	500 µs
Max. negative test pulse on 1 signal	500 µs
Coil characteristics	24 V DC: low-current phase 1.0 W, high-current phase 2.4 W
Operating medium	Compressed air as per ISO 8573-1:2010 [7:4:4]
Information on operating and pilot media	Operation with oil lubrication possible (required for further use)
Vibration resistance	Transport application test with severity level 2 as per FN 942017-4 and EN 60068-2-6
Shock resistance	Shock test with severity level 2 as per FN 942017-5 and EN 60068-2-27
Corrosion resistance class (CRC)	2 - Moderate corrosion stress
Temperature of medium	-5 °C ... 50 °C
Relative air humidity	0 - 90 %
Ambient temperature	-5 °C ... 50 °C
Max. tightening torque for valve mounting	0.9 Nm ... 1.1 Nm
Product weight	140 g
Electrical connection	3-pin M12x1 Central plug Round design
Type of mounting	On sub-base
Note on materials	RoHS-compliant